

Hyatt Regency Hesperia Madrid is a sophisticated urban hotel located in the heart of Madrid's bustling business and cultural center and 15 minutes by car from Madrid-Barajas International Airport and IFEMA. Both corporate and leisure travelers can discover an exquisite gastronomic experience at Santceloni as well as a variety of activities, from museums to shopping and more.



HYATT
REGENCY™

HYATT REGENCY HESPERIA MADRID



HYATT REGENCY HESPERIA MADRID



Paseo de la Castellana, 57, 28046
Madrid, España



HYATT REGENCY HESPERIA MADRID

Hyatt Regency Hesperia Madrid Hotel is a sophisticated urban hotel located on Paseo de la Castellana, in the heart of Madrid's bustling business and cultural center and 15 minutes by car from International Airport and IFEMA. Both corporate and leisure travellers alike can discover an exquisite gastronomic experience at Santceloni as well as nearby activities, from museums to shopping and more.



• HYATT REGENCY HESPERIA MADRID



• ACCOMMODATION

Hyatt Regency Hesperia Madrid Hotel has 169 rooms, including 33 suites, each offering a warm, elegant and freshly renovated modern style, overlooking Paseo de la Castellana or featuring a bright and peaceful interior view



• ACCOMMODATION



● REGENCY CLUB



MEETING & EVENTS

9 multifunctional rooms along with our impeccable team make Hyatt Regency Hesperia Madrid the perfect option for all types of events, from a business conference to a family celebration or a small meeting.



MEETING AND EVENTS



MEETING AND EVENTS



• MEETING AND EVENTS



MEETING AND EVENTS



WEDDINGS AND SOCIAL EVENTS

Hyatt Regency Hesperia Madrid is also suitable for weddings. Celebrate your dream wedding in one of our fabulous function rooms, where our events team will take care of every detail so that the most important day of your life is a complete success

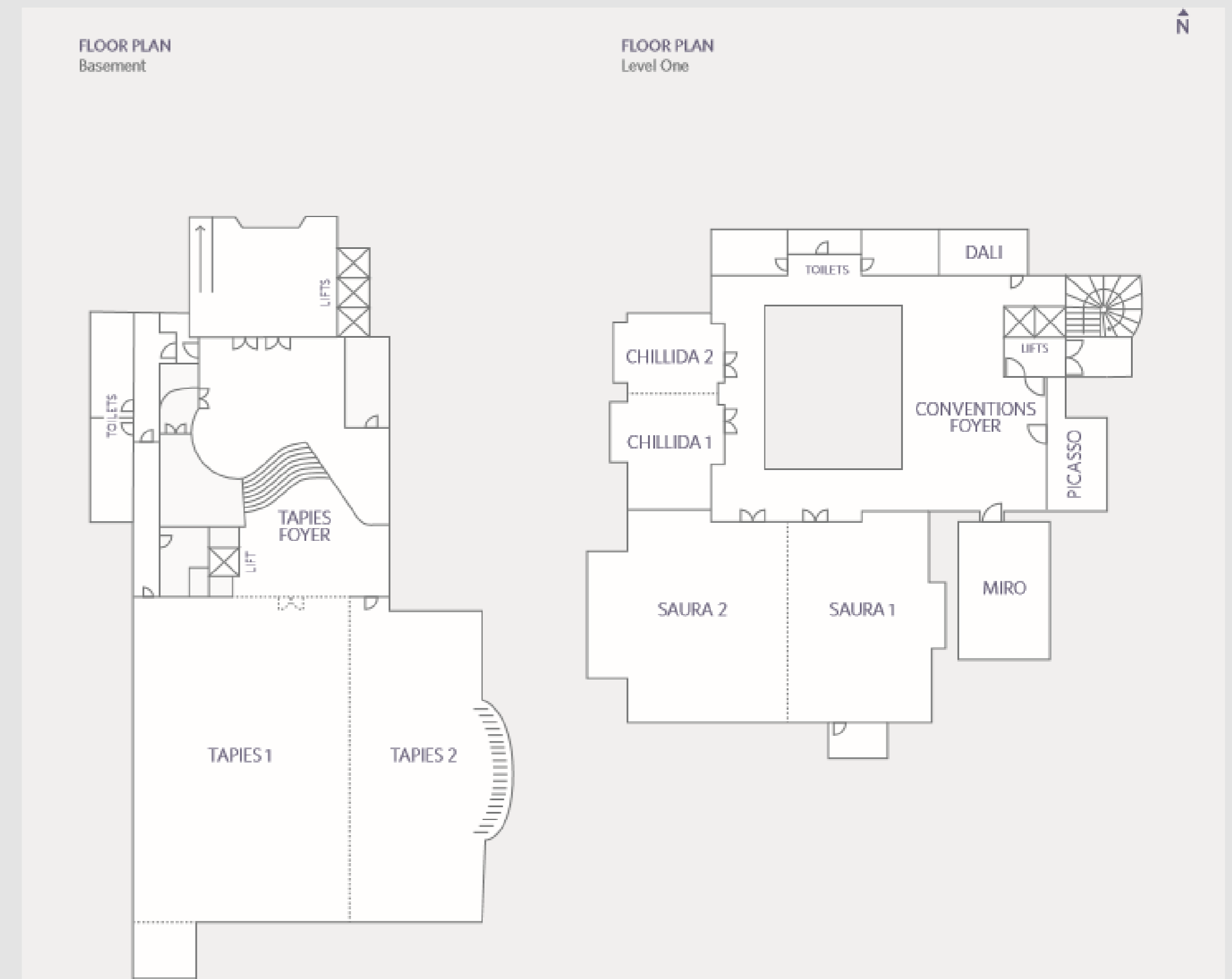


WEDDINGS AND SOCIAL EVENTS



MEETING AND EVENTS

CAPACITY CHART									
Room Name	Room Dimensions L x W x H	Room Size Sq. Ft. / Sq. M.	Banquet	Reception	Theater	Classroom	Boardroom	U-Shape	Square
Basement									
Tapes	68.56 x 42.65 x 10.49 ft 20.9 x 13.0 x 3.2 m	1374.6 127	250	500	268	156	64	72	78
Tapes I	64.3 x 42.65 x 10.49 ft 19.6 x 13.0 x 3.2 m	866.4 80	130	250	126	90	58	50	56
Tapes II	68.6 x 22.63 x 10.49 ft 20.9 x 7.0 x 3.2 m	475.7 44	80	130	100	80	58	48	44
Tapes Foyer	7.81-9.67 ft height 2.38-2.95 m height	1603.82 149	-	175	-	-	-	-	-
Level One									
Saura	72.5 x 64.63 x 7.55 ft 22.1 x 19.7 x 2.3 m	849.7 78	190	250	210	120	54	54	57
Saura I	42.65 x 32.15 x 7.55 ft 13.0 x 9.8 x 2.3 m	380.5 35	60	120	80	60	28	24	27
Saura II	42.65 x 40.35 x 7.55 ft 13.0 x 12.3 x 2.3 m	469.16 43	90	130	110	60	30	27	30
Chillida	40.35 x 22.63 x 7.55 ft 12.3 x 6.9 x 2.3 m	252.6 23	45	60	48	30	30	25	28
Chillida I	22.96 x 22.63 x 7.55 ft 7.0 x 6.9 x 2.3 m	1106 102	24	35	24	18	16	18	21
Chillida II	22.63 x 17.4 x 7.55 ft 6.9 x 5.3 x 2.3 m	1134 105	18	35	18	18	12	12	18
Miro	15.75 x 10.17 x 7.55 ft 4.8 x 3.1 x 2.3 m	52.3 4.8	-	-	-	-	10	-	-
Picasso	18.24 x 12.53 x 7.55 ft 5.56 x 3.82 x 2.3 m	49.2 4.5	-	-	-	-	10	-	-
Dali	17.65 x 9.09 x 7.22 ft 5.38 x 2.77 x 2.2 m	160.38 14.9	-	-	-	-	10	-	-
Conventions Foyer	7.55 ft height 2.3 m height	2281.95 212	-	150	-	-	-	-	-



DINING

Complete your stay by enjoying our fantastic gastronomic offer that combine a wide variety of cultures in the dishes. Enjoy an after-work session at the Mery Bárbola, partake in the Mediterranean flavours at Terrum Restaurant and do not forget to visit Santceloni which was awarded with two Michelin stars and is the benchmark for Spanish haute cuisine.



• MERY BARBOLA BAR



• TERRUM RESTAURANT





HYATT
REGENCY™
THANK YOU

Fernanda Previgliano
International Sales Manager

E: fernanda.previgliano@hyatt.com

T +34 91.210.88.24